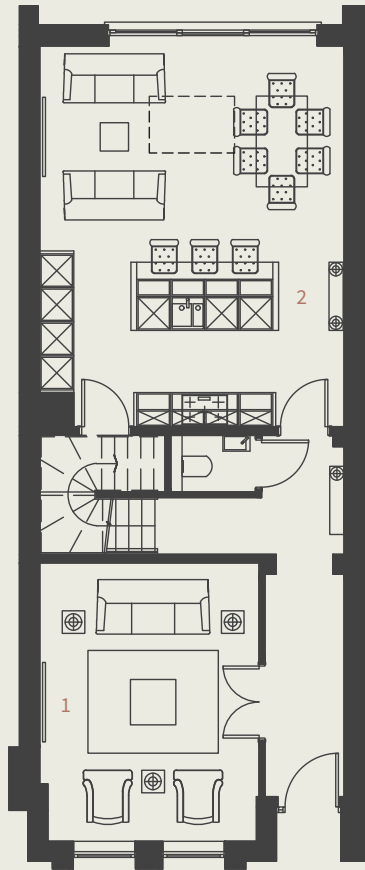


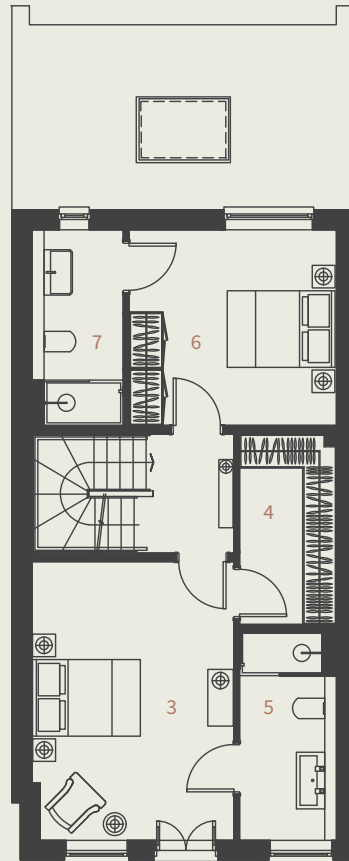


Plot 10 & 11

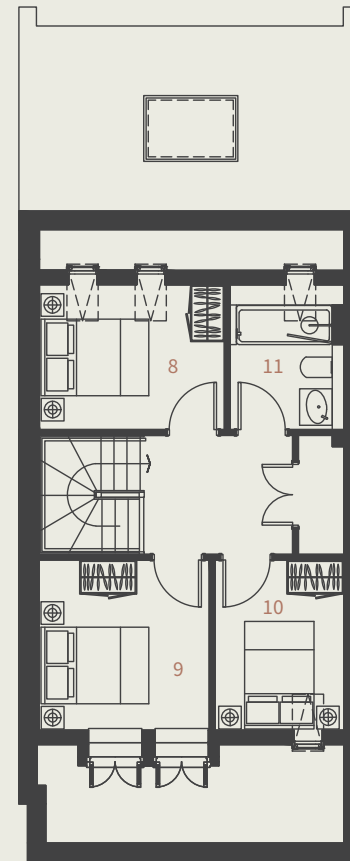
- 5 bedrooms
- 3 bathrooms
- 2 parking spaces



GROUND FLOOR



FIRST FLOOR



SECOND FLOOR

1. Lounge	5.0m x 4.0m
2. Kitchen Living Dining	6.8m x 5.5m
3. Master Bedroom	5.0m x 3.6m
4. Dressing Room	3.3m x 1.7m
5. En-Suite	3.8m x 1.7m
6. Bedroom 2	3.8m x 3.5m
7. En-Suite	3.8m x 1.6m
8. Bedroom 3	3.4m x 2.4m
9. Bedroom 4	3.0m x 3.2m
10. Bedroom 5	3.0m x 2.25m
11. Bathroom	2.4m x 2m

177.7sqm/1912sqft

laundryquarter.com