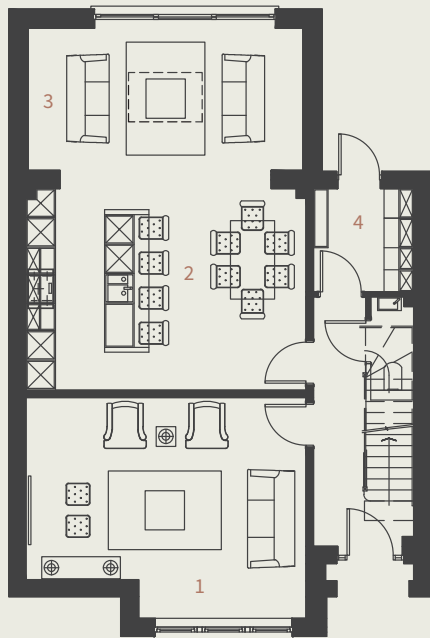


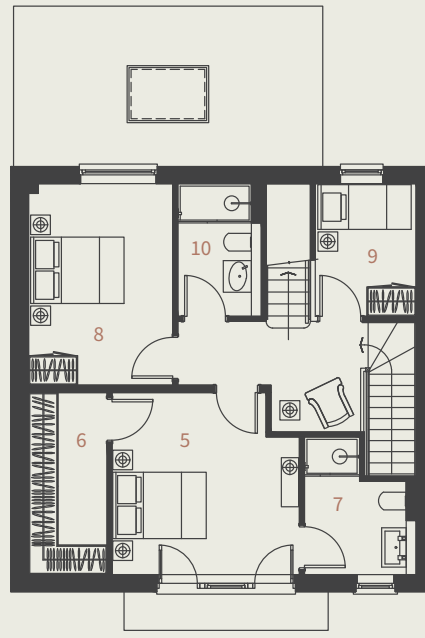


Plot 12 & 13

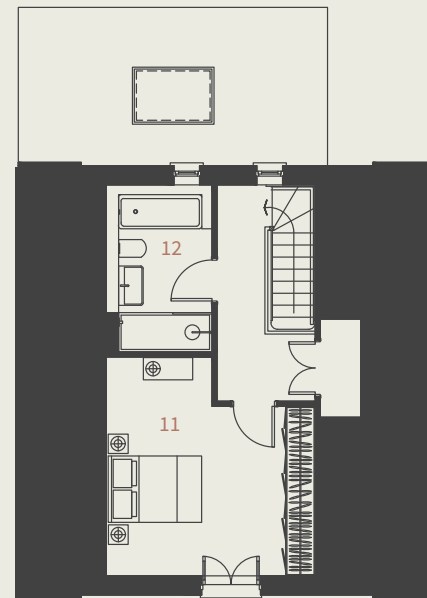
- 4 bedrooms
- 2 bathrooms
- 2 parking spaces



GROUND FLOOR



FIRST FLOOR



SECOND FLOOR

1. Lounge	5.7m x 4.7m
2. Kitchen Living Dining	5.7m x 3.95m
3. Snug	5.7m x 3.0m
4. Utility	2.2m x 2.1m
5. Master Bedroom	3.85m x 3.75m
6. Dressing Room	3.75m x 1.6m
7. En-Suite	2.8m x 2.45m
8. Bedroom 2	4.15m x 3.0m
9. Bedroom 3	2.6m x 2.05m
10. Shower Room	2.6m x 1.7m
11. Bedroom 4	4.8m x 4.25m
12. Bathroom	3.4m x 2.15m

181.6 sqm / 1954 sqft

laundryquarter.com